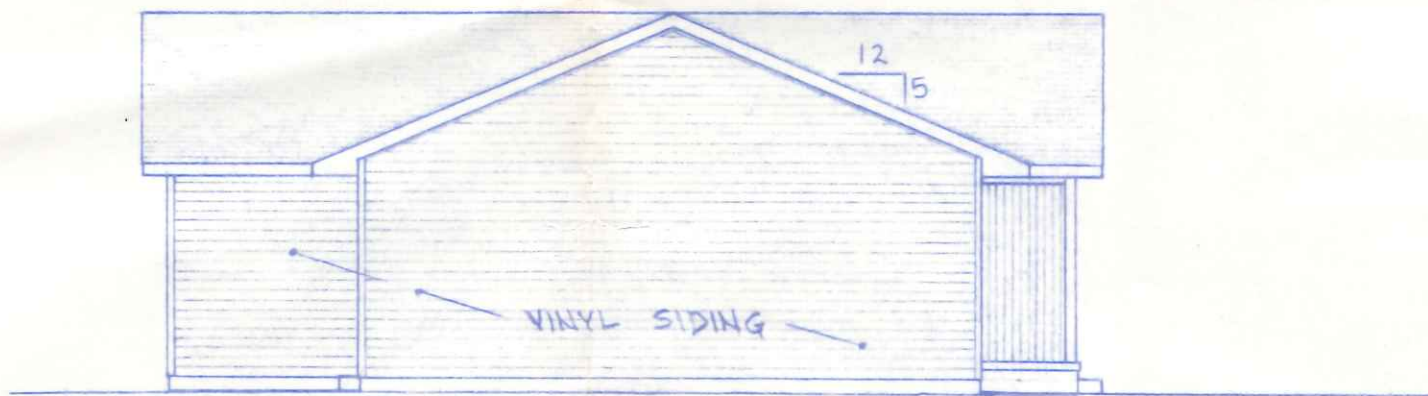


FRONT ELEVATION

1/4" = 1'-0"



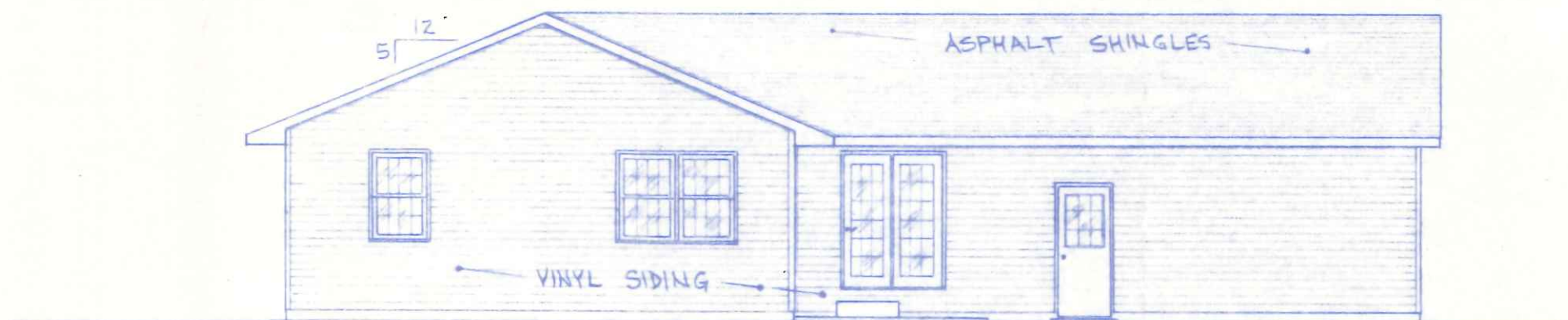
LEFT SIDE ELEVATION

1/8" = 1'-0"



RIGHT SIDE ELEVATION

1/8" = 1'-0"



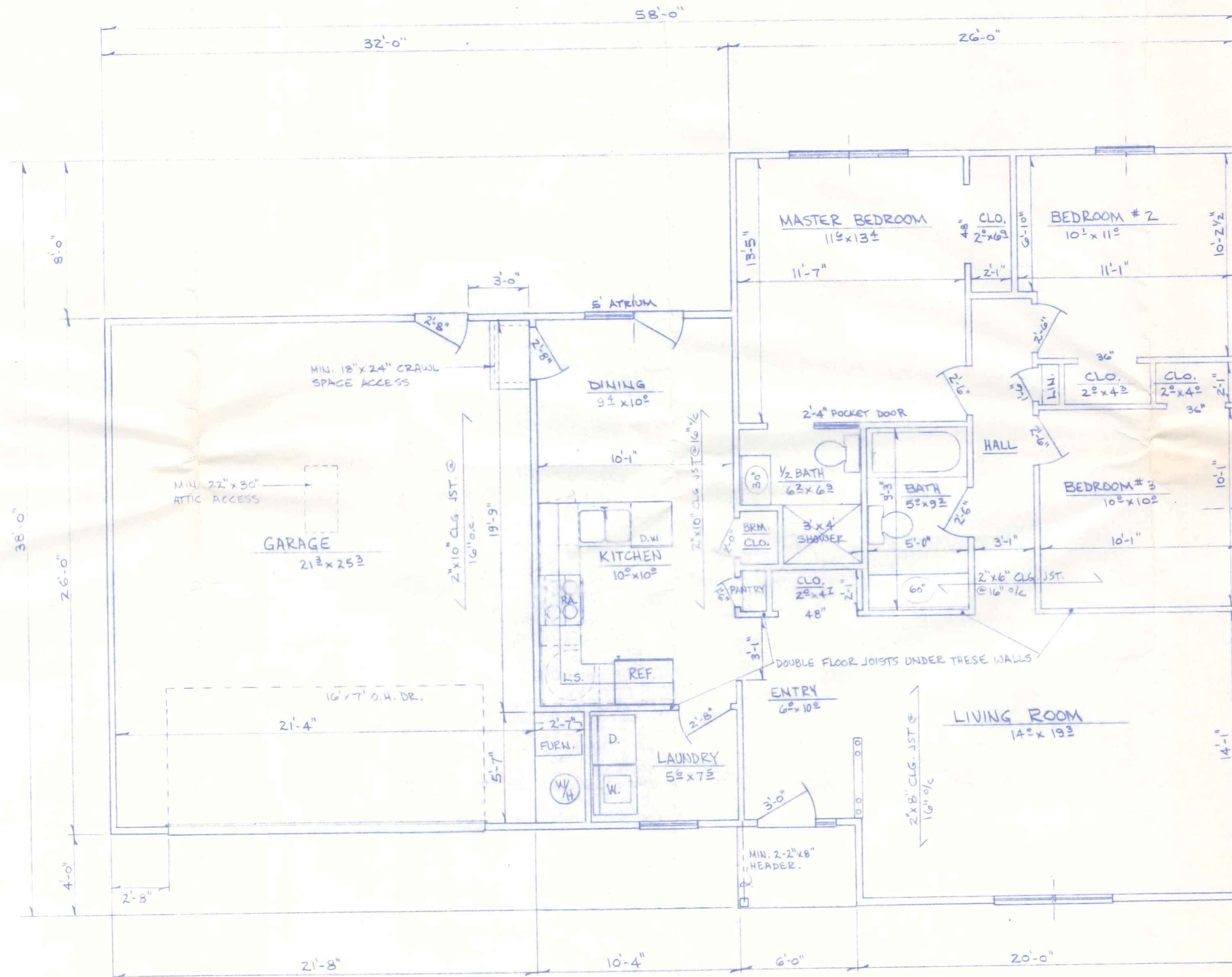
REAR ELEVATION

1/8" = 1'-0"

925 N. Harmony

BECK CONSTRUCTION CO.		CO. ED. M.	NAPOLEON, OH
SCALE: NOTED		R.D.S.	
MARCH, 1991			
EXTERIOR ELEVATIONS			
PLAN NO. 252		1 OF 4	

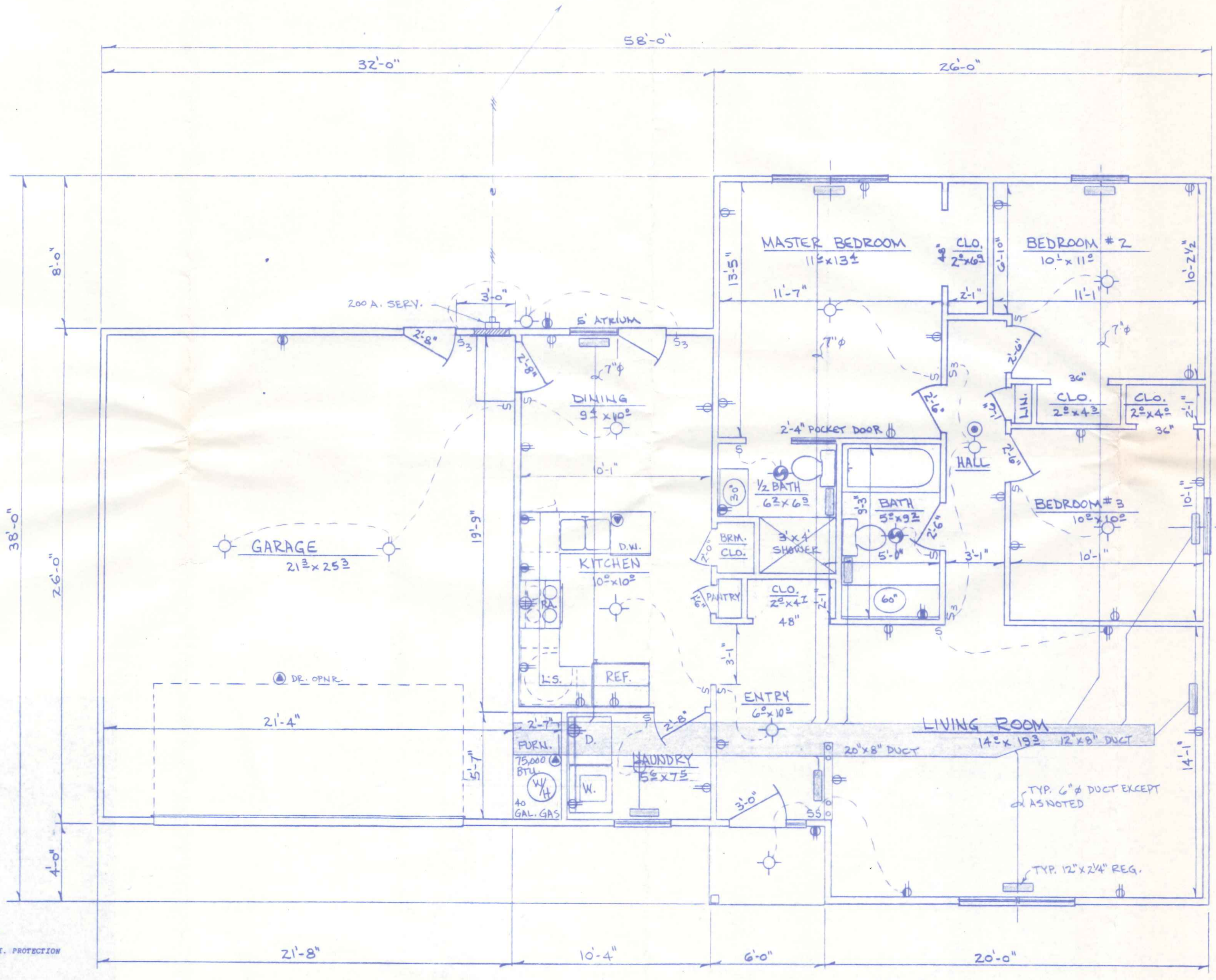
RON SONNENBERG



MIN. HEADER SIZES  
 EXTERIOR: 2-2"x6" UP TO 4' SPAN  
 2-2"x8" UP TO 6' " "  
 GAR. DOOR - SEE DETAIL  
 INTERIOR: 2-2"x6" UP TO 3' SPAN  
 2-2"x8" OVER 3' " "

AREAS  
 1233 SQ. FT. - LIVING AREA  
 563 " " - GARAGE  
 24 " " - PORCH

FLOOR PLAN  
 1/4" = 1'-0"



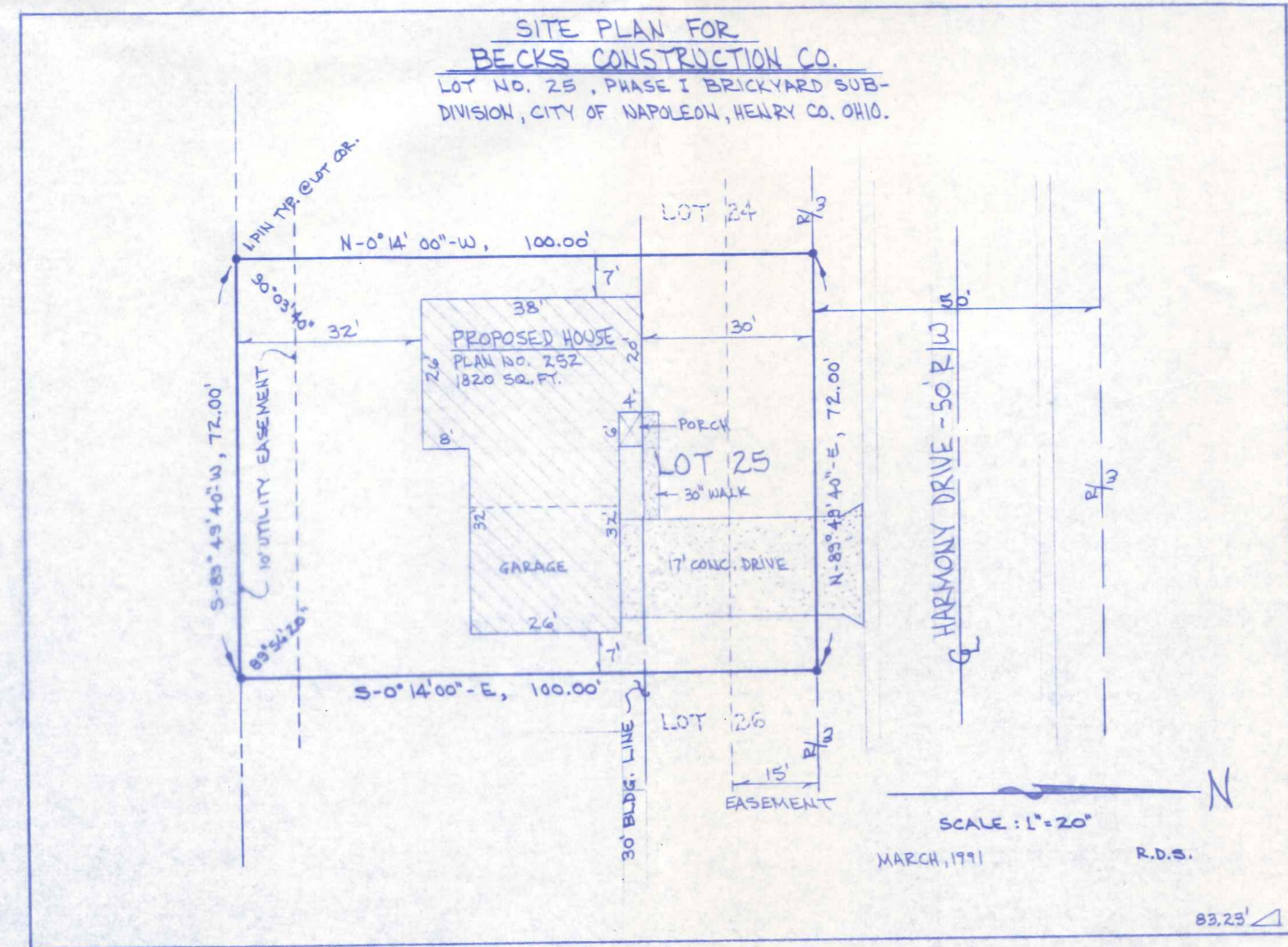
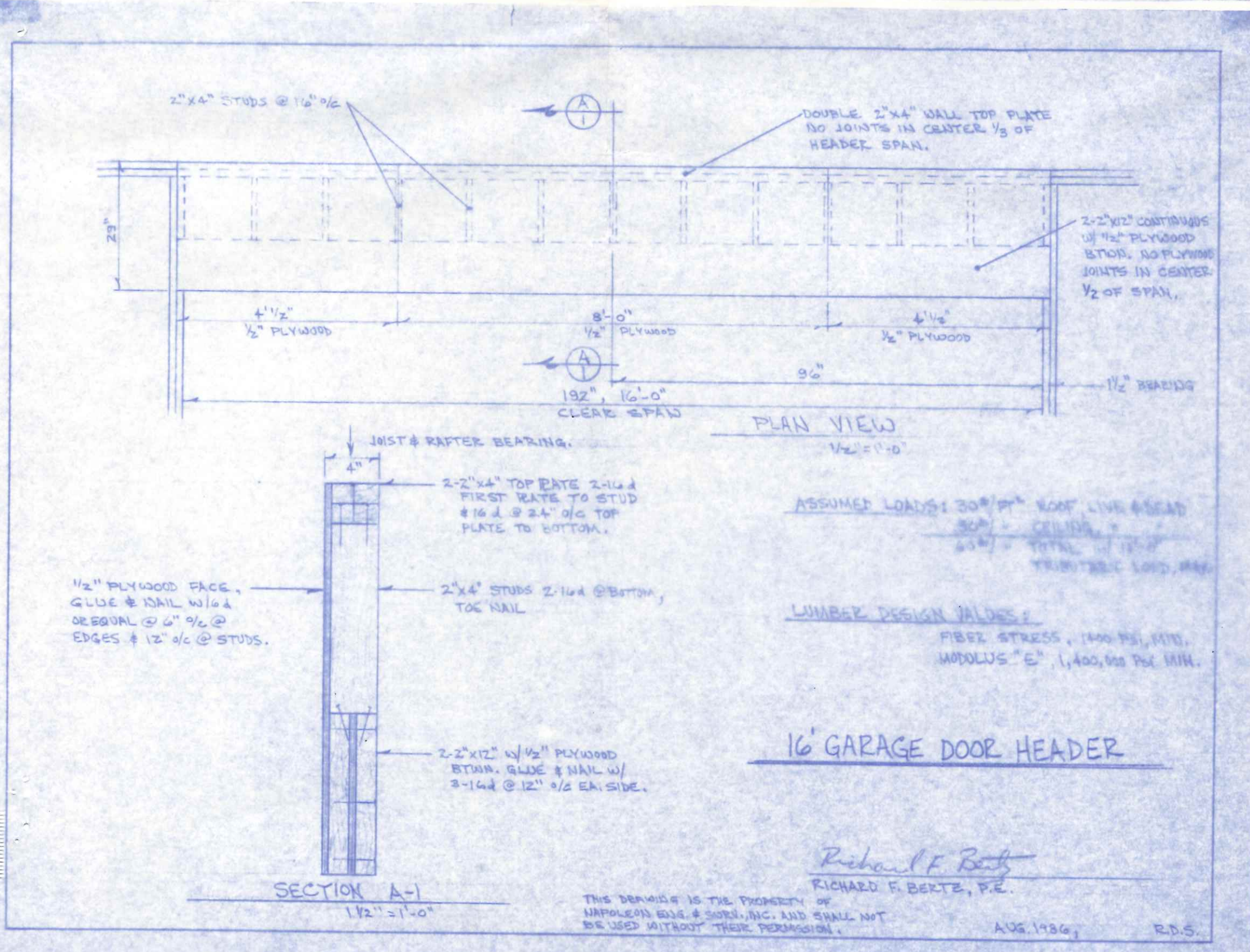
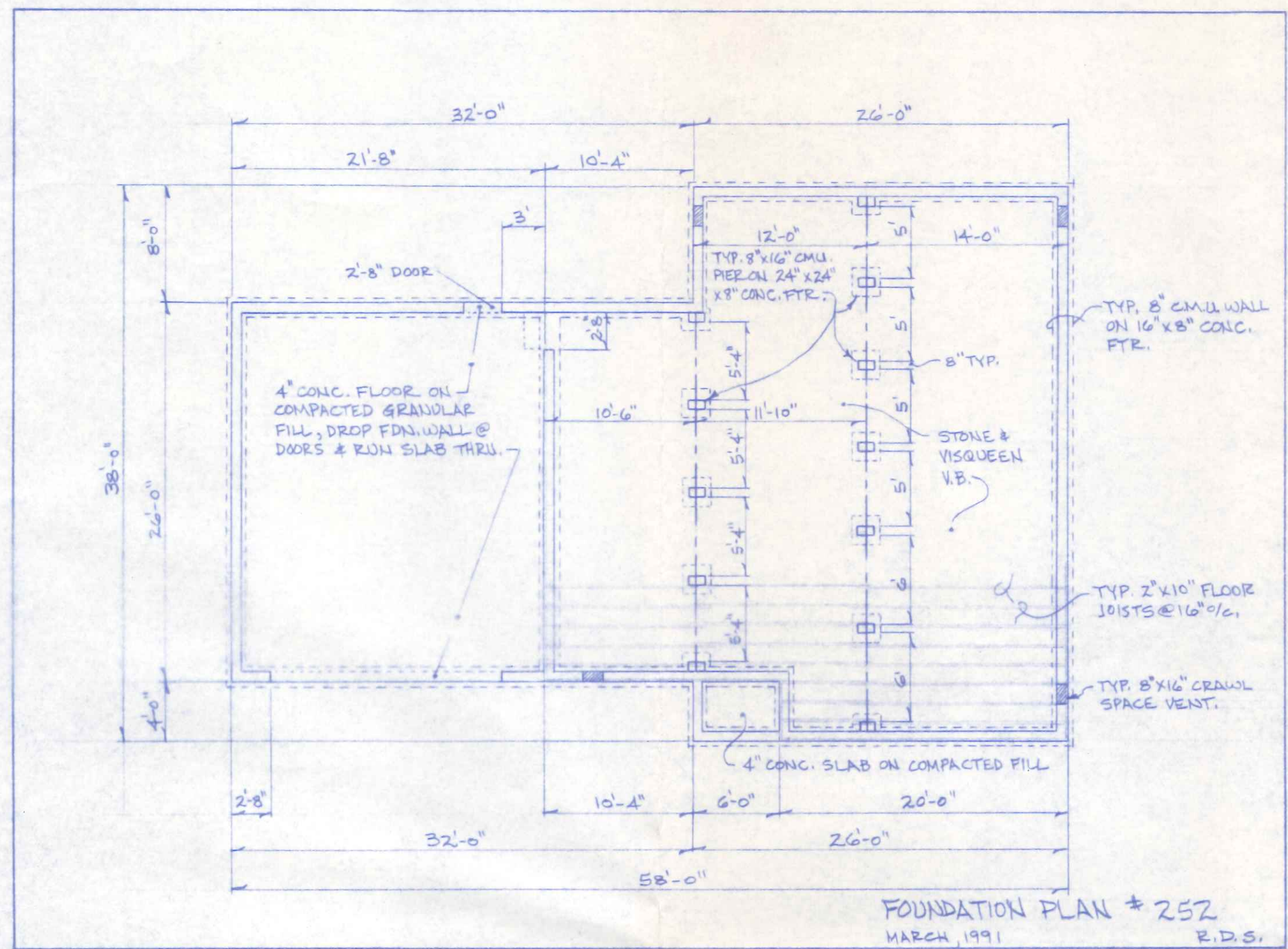
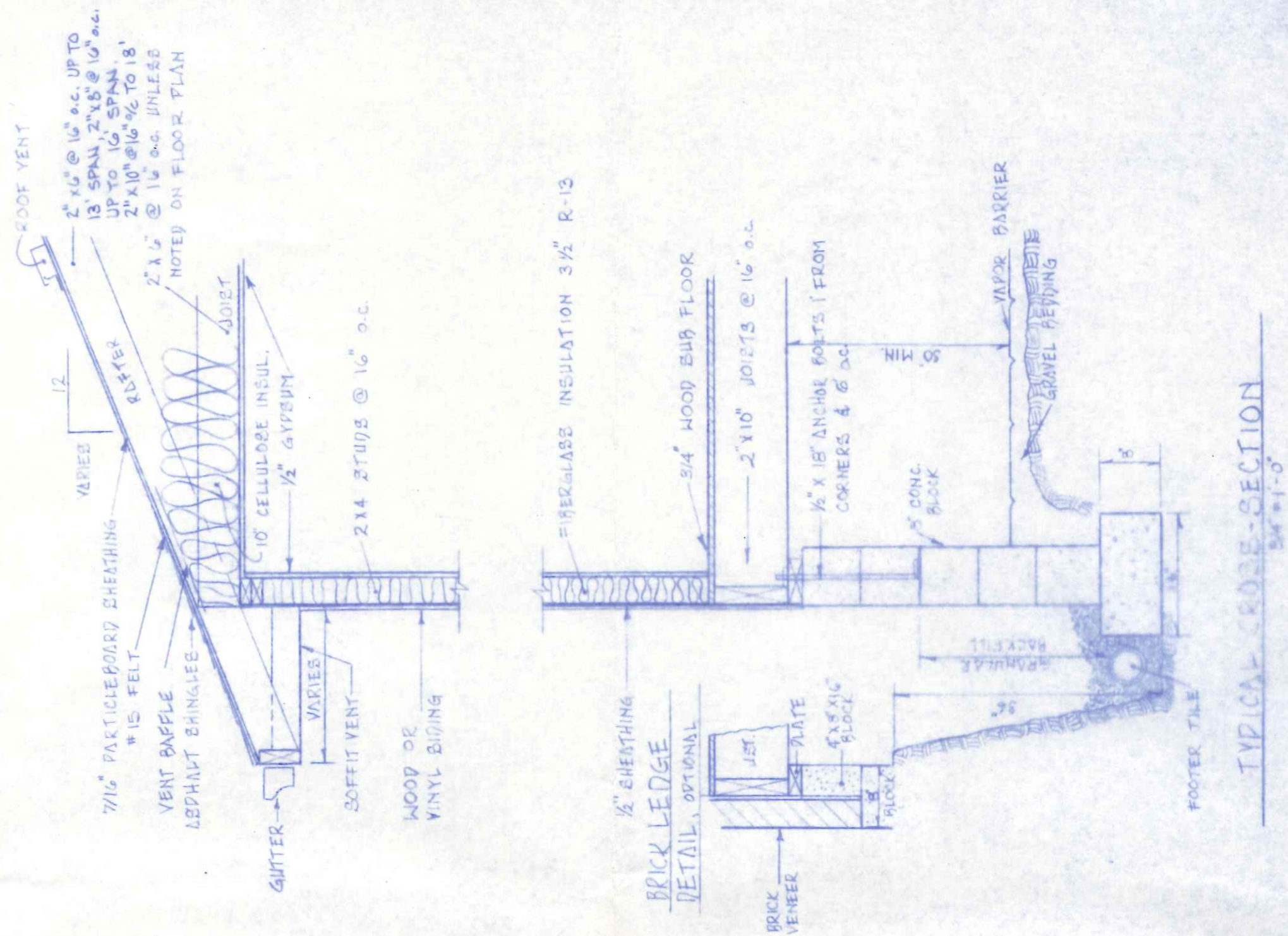
FLOOR PLAN  
1/4" = 1'-0"

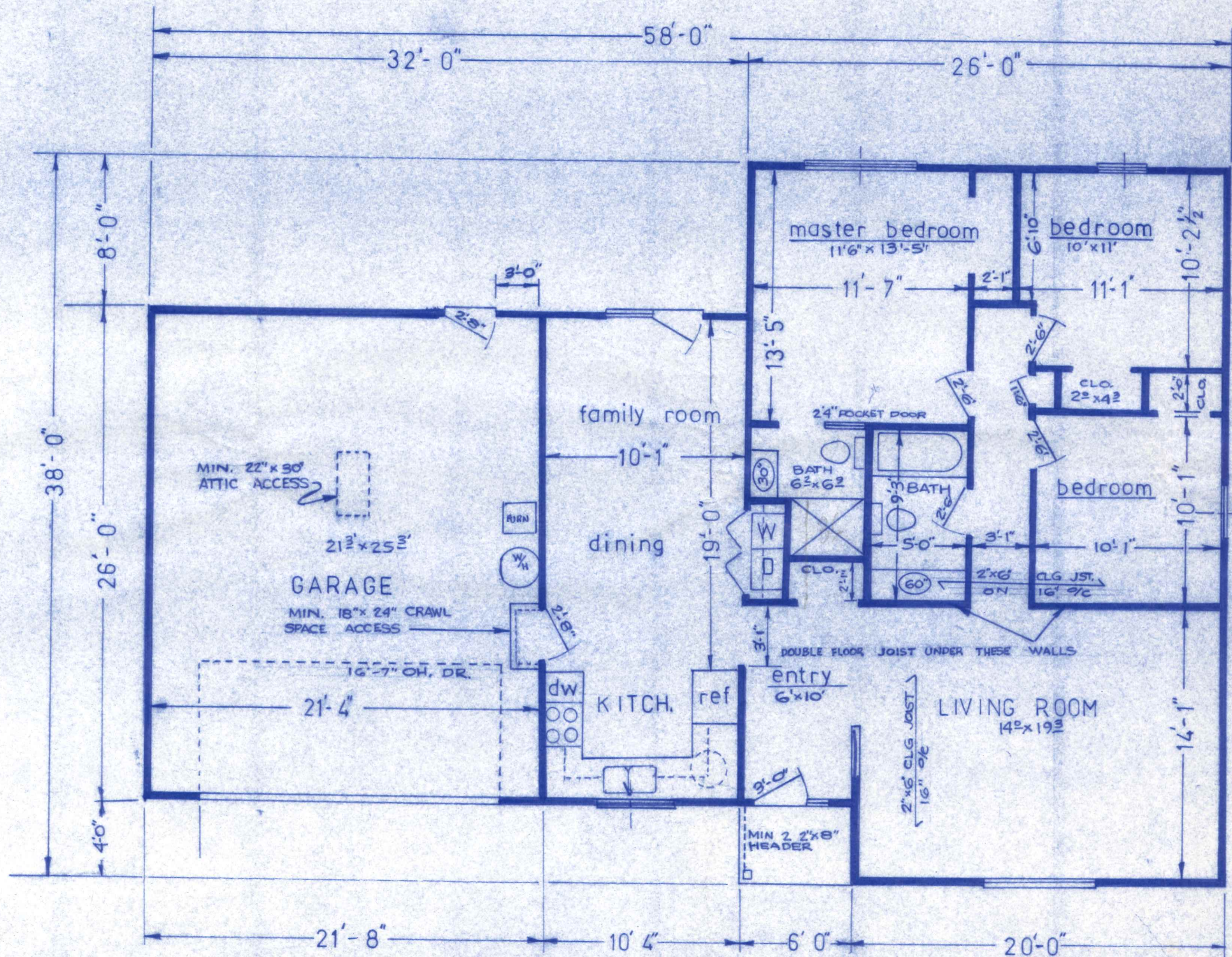
AREAS  
1233 SQ. FT. - LIVING AREA  
563 " " - GARAGE  
24 " " - PORCH

- LEGEND
- CEILING LIGHT
  - WALL LIGHT
  - CEILING CIRCULATING FAN
  - CEILING LIGHT WITH CIRCULATING FAN
  - CEILING LIGHT WITH EXHAUST FAN
  - EXTERIOR FLOOD LIGHT
  - PRIMARY POWERED SMOKE DETECTOR WITH BATTERY BACKUP
  - SPECIAL OUTLET AS NOTED
  - 120V - 20A DUPLEX RECEPTICLE
  - 120V - 20A DUPLEX RECEPTICLE 24 SWITCHED
  - 120V - 20A DUPLEX RECEPTICLE WITH G.F.C.I. PROTECTION
  - 240V APPLIANCE OUTLET
  - 120V - 20A LIGHT SWITCH
  - 120V - 20A FAN SWITCH
  - 120V - 20A 3 WAY LIGHT SWITCH

- NOTES
- 1) See Foundation Plan for Basement Electrical
  - 2) Min. 20A. CIR., #12 Wire
  - 3) All Work and Material shall be as per National Electric Code

ELECTRICAL & HEATING  
PLAN NO. 252  
3 OF 4





**MIN. HEADER SIZES**  
EXTERIOR 2-2"x6" UP TO 4' SPAN  
 2-2"x8" UP TO 6' "  
 GAR. DOOR - SEE DETAILS  
INTERIOR 2-2"x6" UP TO 3' SPAN  
 2-2"x8" OVER 3' "

**AREAS**  
 1233 S/F LIVING  
 563 " GARAGE  
 24 " PORCH

**FLOOR PLAN**  
 1/4" = 1'-0"

TOLERANCES (EXCEPT AS NOTED)	REVISIONS			REVISED FLOOR PLAN FOR ROBERT HEFT		
	NO.	DATE	BY	BECK BUILDERS		
DECIMAL ±	1			DRAWN BY <i>B.H.</i> SCALE 1/4" = 1'-0" MATERIAL CHK'D DATE DRAWING NO. TRACED APP'D		
FRACTIONAL ±	2					
ANGULAR ±	3					
	4					
	5					